

REVISIONS				
SYM.	ZONE	DESCRIPTION	DATE	APP.
A		PTS. 1 + 2 REFLECT CHANGES TO PTS. 3 + 4. TMK	5/18/07	EC
B	F6	Added note regarding tube orientation at Inj Cryomod level.	1/15/08	TOC

The orientation of these 2 tubes is reversed in the final assembly at the Injector Cryomodule level. The longer tube is installed on the coupler side while the shorter tube is installed towards the flange side. See 7102-080 for details.

INPUT COUPLER (7102-003)  
COLD OUTER CONDUCTOR  
(100.310.000 ASM)

1 INPUT COUPLER 80K COOLING - LEFT, ASSEMBLY

FILE NAME: 7102-036  
SHEET NO.: 1  
DFT. SCALE: 1:1  
MATERIAL: AS NOTED  
QTY: 5 PER ERL INJECTOR CRYOMODULE  
NOTES: VIEW TO SHOW ITEM 3 FASTENED  
TO INPUT COUPLER (LEFT)

22	Sh.1	#10-32 x 1/2 Soc Hd Cap Scr, 316 SS	6		McMaster-Carr's 92185A989	
21	Sh.1	#10-32 x 7/8 Soc Hd Cap Scr, 316 SS	6		McMaster-Carr's 92185A960	
20	Sh.1	#10 Spring Washer, 316 SS	12		McMaster-Carr's 92147A430	
18	Sh.7	80K FLEX JUMPER	2			
17	Sh.7	CLAMP STRIP	4			
3	Sh.2	INPUT COUPLER COLD, 80K FLANGES COOLING UNIT, LEFT	1			
1	Sh.1	INPUT COUPLER 80K COOLING - LEFT, ASSEMBLY	1			

2 INPUT COUPLER 80K COOLING - RIGHT, ASSEMBLY

FILE NAME: 7102-036  
SHEET NO.: 1  
DFT. SCALE: 1:1  
MATERIAL: AS NOTED  
QTY: 5 PER ERL INJECTOR CRYOMODULE  
NOTES: VIEW TO SHOW ITEM 4 FASTENED  
TO INPUT COUPLER (RIGHT)

22	Sh.1	#10-32 x 1/2 Soc Hd Cap Scr, 316 SS	6		McMaster-Carr's 92185A989	
21	Sh.1	#10-32 x 7/8 Soc Hd Cap Scr, 316 SS	6		McMaster-Carr's 92185A960	
20	Sh.1	#10 Spring Washer, 316 SS	12		McMaster-Carr's 92147A430	
18	Sh.7	80K FLEX JUMPER	2			
17	Sh.7	CLAMP STRIP	4			
4	Sh.2	INPUT COUPLER COLD, 80K FLANGES COOLING UNIT, RIGHT	1			
2	Sh.1	INPUT COUPLER 80K COOLING - RIGHT, ASSEMBLY	1			

Release of final PO version for Meyer Tool - June 19, 2007.

FOR MACHINING LUBRICANT USE ONLY  
ALKALINE DETERGENT LUBRICANT CIMSTAR 40  
OR EQUIVALENT APPROVED BY CORNELL LEPP

TECHNICAL RESOURCE APPROVALS REQUIRED BEFORE FABRICATION			
	OK	DATE	N/A
DRAFTING (O'Connell):			
MACHINE SHOP (Kaminski):			
CHEMISTRY (Conklin):			
ELECTRONICS SHOP (Barley):			
FURNACE BRAZING (Sherwood):			
BEAM WELDING (Sears):			
WELDING OTHER (Gallagher):			
UTILITIES INTEGRATION (Gallagher):			
STOCKROOMS (Lockwood):			

ITEM	DWG. NO.	DESCRIPTION	G1	G2	G3	REMARKS	REV.
			QUANTITY				
PRINT DISTR.	7102-036 SH. NO. 1 OF 7	CR-1	UNLESS OTHERWISE SPECIFIED:  DIMENSIONS ARE IN INCHES: TOLERANCES ON: .0 ± .02 .00 ± .010 .000 ± .005 FRACTIONS ± 1/32 ANGLES ± 0.5° ALL SURFACES				
			CORNELL UNIVERSITY FLOYD R. NEWMAN LABORATORY ITHACA, NY 14853				
			ERL INJECTOR CRYOMODULE, INPUT COUPLER 80K FLANGE COOLING INPUT COUPLER 80K COOLING - LEFT + RIGHT, ASSEMBLIES				
CHECKED BY: VM	DRAWN BY: TMK	DRAWN FOR: VM	DATE: 4/6/2007	SCALE: D	7102-036 SH. NO. 1 OF 7	REV. B	
APPROVED BY: VM							

REVISIONS				
SYM.	ZONE	DESCRIPTION	DATE	APP.
A		PTS. 3 + 4 REFLECT CHANGES TO PTS. 5 + 6	TMK 5/18/07	EC

0.64  
REF.

9.03 REF.

5.81  
REF.

0.64  
REF.

9.03 REF.

5.81  
REF.

3 INPUT COUPLER COLD 80K FLANGE COOLING UNIT SUBASM - LEFT

FILE NAME: 7102-036  
SHEET NO.: 2  
DFT. SCALE: 1:1  
MATERIAL: AS NOTED  
QTY: 1 PER ASSEMBLY  
NOTES:

19	Sh.2	#8-32 x 1/2 Soc Hd Cap Scr, 316 SS	3			McMaster-Carr's 92185A194	
16	Sh.6	BOTTOM CLAMP	1				
15	Sh.6	TOP CLAMP	1				
5	Sh.3	80K COOLING PLATES SUBASM - LEFT	1				
3	Sh.2	INPUT COUPLER COLD 80K FLANGE COOLING UNIT SUBASM - LEFT	1				

4 INPUT COUPLER COLD 80K FLANGE COOLING UNIT SUBASM - RIGHT

FILE NAME: 7102-036  
SHEET NO.: 2  
DFT. SCALE: 1:1  
MATERIAL: AS NOTED  
QTY: 1 PER ASSEMBLY  
NOTES:

19	Sh.2	#8-32 x 1/2 Soc Hd Cap Scr, 316 SS	3			McMaster-Carr's 92185A194	
16	Sh.6	BOTTOM CLAMP	1				
15	Sh.6	TOP CLAMP	1				
6	Sh.3	80K COOLING PLATES SUBASM - RIGHT	1				
4	Sh.2	INPUT COUPLER COLD 80K FLANGE COOLING UNIT SUBASM - RIGHT	1				

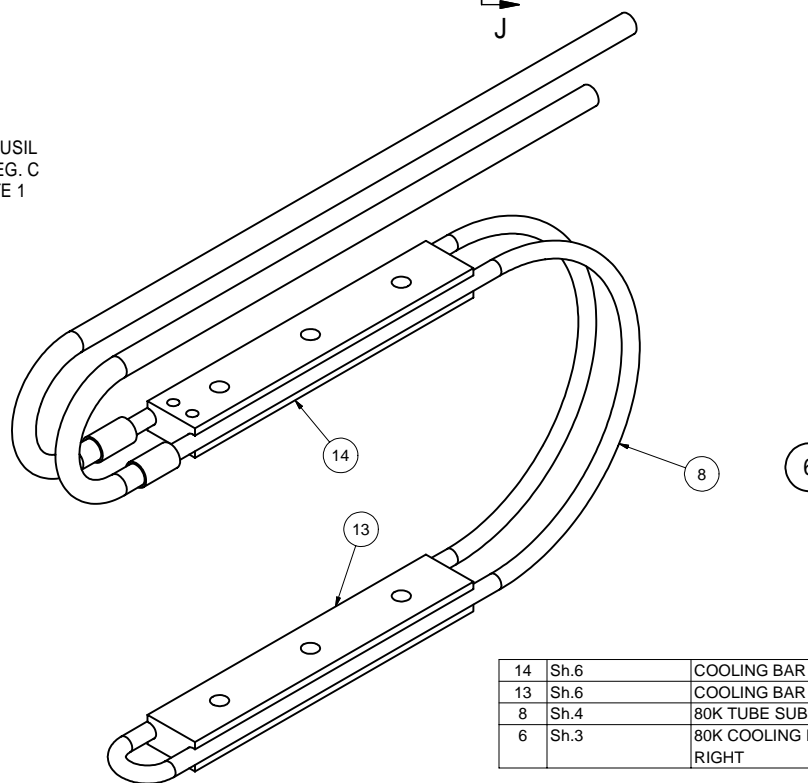
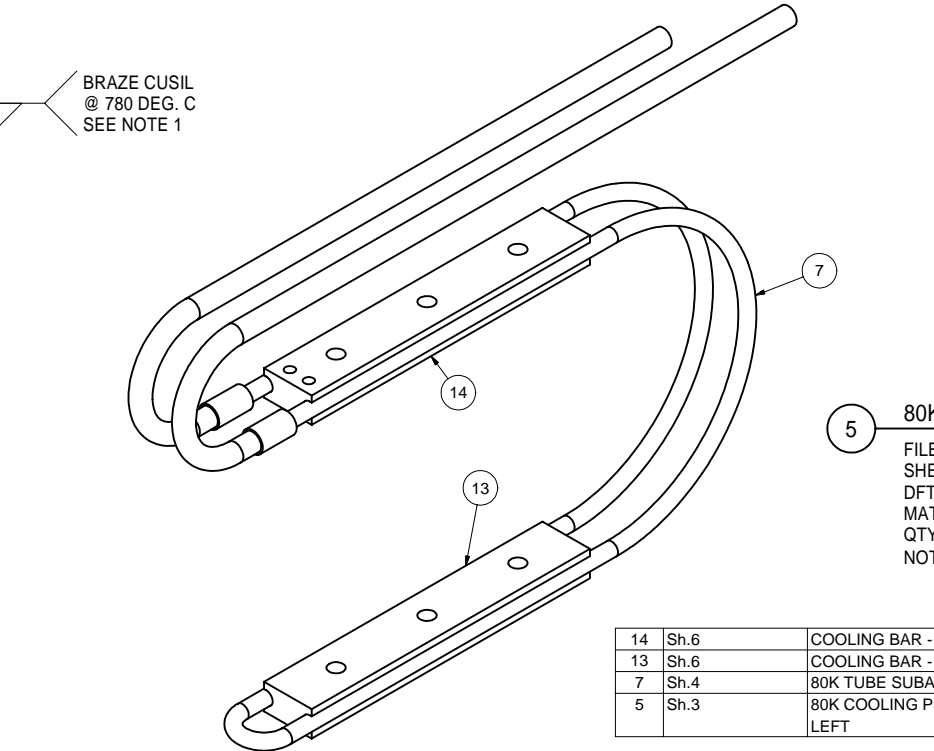
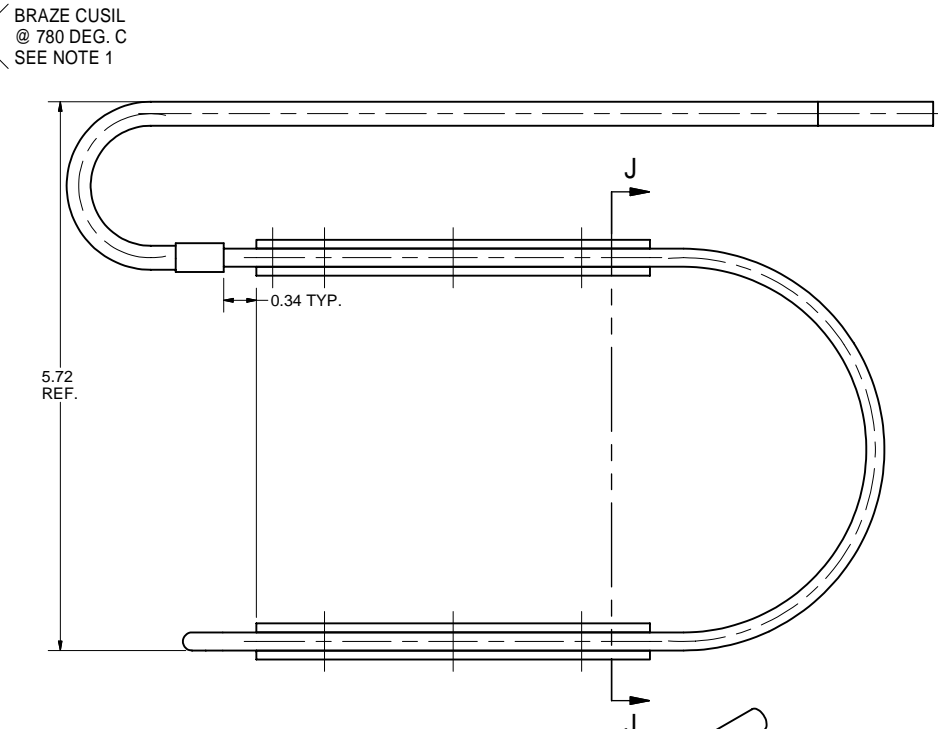
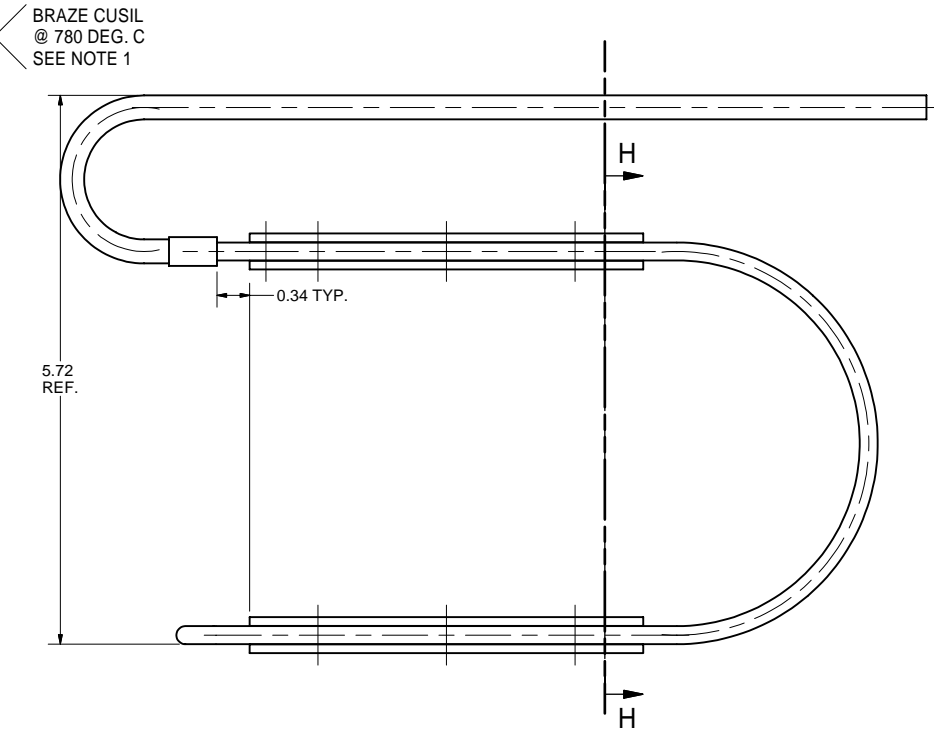
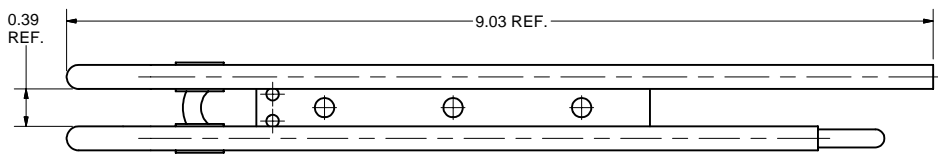
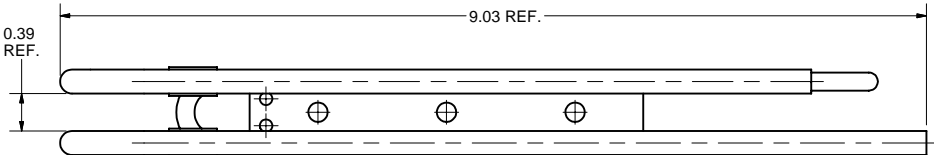
Release of final PO version for Meyer Tool - June 19, 2007.

FOR MACHINING LUBRICANT USE ONLY  
ALKALINE DETERGENT LUBRICANT CIMSTAR 40  
OR EQUIVALENT APPROVED BY CORNELL LEPP

TECHNICAL RESOURCE APPROVALS REQUIRED BEFORE FABRICATION			
	OK	DATE	N/A
DRAFTING (O'Connel):			
MACHINE SHOP (Kaminski):			
CHEMISTRY (Conklin):			
ELECTRONICS SHOP (Barley):			
FURNACE BRAZING (Sherwood):			
BEAM WELDING (Sears):			
WELDING OTHER (Gallagher):			
UTILITIES INTEGRATION (Gallagher):			
STOCKROOMS (Lockwood):			

		ITEM	DWG. NO.	DESCRIPTION			G1	G2	G3	REMARKS		REV.
							QUANTITY					
D		PRINT DISTR.	PLOT DATE: 1/15/2008 CAD FILE NAME: 7102-036.idw									
7102-036 SH. NO. 2 OF 7		CR-1	UNLESS OTHERWISE SPECIFIED:  DIMENSIONS ARE IN INCHES; TOLERANCES ON: .0 ± .02 .00 ± .010 .000 ± .005 FRACTIONS ± 1/32 ANGLES ± 0.5° ALL SURFACES		<div><div>CORNELL UNIVERSITY</div><div><b>LEPP</b></div><div>LABORATORY FOR ELEMENTARY-PARTICLE PHYSICS</div></div> <div>CORNELL UNIVERSITY Floyd R. Newman Laboratory Ithaca, NY 14853</div> <div>ERL Injector Cryomodule, Input Coupler 80K Flange Cooling Input Coupler 80K Flange Cooling Subasms - Left + Right</div>							
A		REV.	CHECKED BY: VM		DRAWN BY TMK	DRAWN FOR VM	DATE 4/6/2007	SCALE D	7102-036		REV. A	
			APPROVED BY: VM						SH. NO. 2 OF 7			

REVISIONS				
SYM.	ZONE	DESCRIPTION	DATE	APP.
A		PTS. 5 + 6 REFLECT CHANGES TO PTS. 7 + 8. TMK	5/18/07	EC



5 80K COOLING PLATES SUBASM - LEFT

FILE NAME: 7102-036  
SHEET NO.: 3  
DFT. SCALE: 1:1  
MATERIAL: AS NOTED  
QTY: 1 PER SUB-ASM  
NOTES: 1. PROVIDE GOOD THERMAL CONTACT  
BETWEEN COPPER TUBE (ITEM 7)  
AND ITEMS 13 + 14.

14	Sh.6	COOLING BAR - 2	1				
13	Sh.6	COOLING BAR - 1	1				
7	Sh.4	80K TUBE SUBASM - LEFT	1				
5	Sh.3	80K COOLING PLATES SUBASM - LEFT	1				

6 80K COOLING PLATES SUBASM - RIGHT

FILE NAME: 7102-036  
SHEET NO.: 3  
DFT. SCALE: 1:1  
MATERIAL: AS NOTED  
QTY: 1 PER SUB-ASM  
NOTES: 1. PROVIDE GOOD THERMAL CONTACT  
BETWEEN COPPER TUBE (ITEM 7)  
AND ITEMS 13 + 14.

14	Sh.6	COOLING BAR - 2	1				
13	Sh.6	COOLING BAR - 1	1				
8	Sh.4	80K TUBE SUBASM - RIGHT	1				
6	Sh.3	80K COOLING PLATES SUBASM - RIGHT	1				

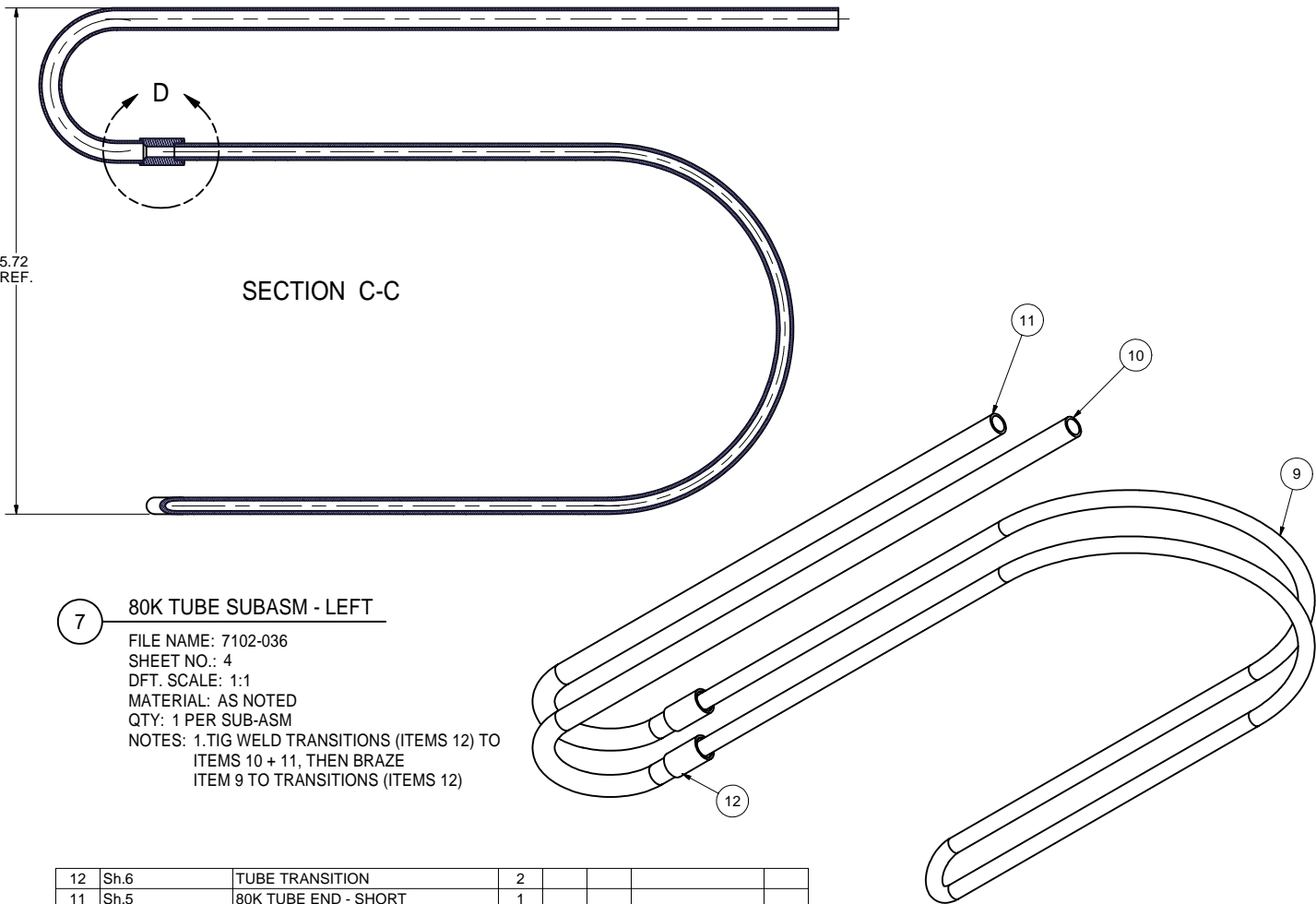
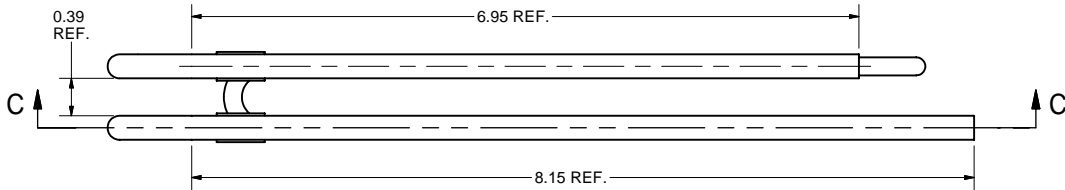
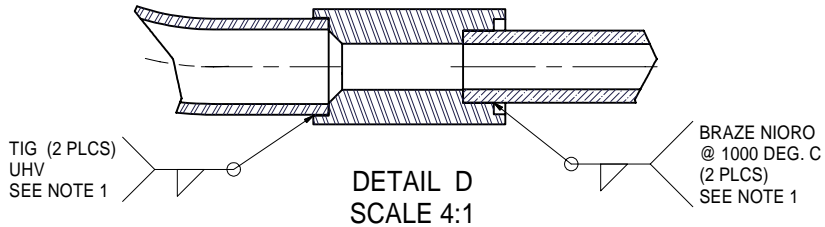
Release of final PO version for Meyer Tool - June 19, 2007.

FOR MACHINING LUBRICANT USE ONLY  
ALKALINE DETERGENT LUBRICANT CIMSTAR 40  
OR EQUIVALENT APPROVED BY CORNELL LEPP

TECHNICAL RESOURCE APPROVALS REQUIRED BEFORE FABRICATION			
	OK	DATE	N/A
DRAFTING (O'Connell):			
MACHINE SHOP (Kaminski):			
CHEMISTRY (Conklin):			
ELECTRONICS SHOP (Barley):			
FURNACE BRAZING (Sherwood):			
BEAM WELDING (Sears):			
WELDING OTHER (Gallagher):			
UTILITIES INTEGRATION (Gallagher):			
STOCKROOMS (Lockwood):			

ITEM	DWG. NO.	DESCRIPTION	G1	G2	G3	REMARKS	REV.
PRINT DISTR.	7102-036 SH. NO. 3 OF 7	PLOT DATE: 1/15/2008 CAD FILE NAME: 7102-036.idw	QUANTITY				
CR-1		UNLESS OTHERWISE SPECIFIED:  DIMENSIONS ARE IN INCHES; TOLERANCES ON: .0 ± .02 .00 ± .010 .000 ± .005 FRACTIONS ± 1/32 ANGLES ± 0.5° ALL SURFACES	CORNELL UNIVERSITY FLOYD R. NEWMAN LABORATORY ITHACA, NY 14853			ERL Injector Cryomodule, Input Coupler 80K Flange Cooling 80K Cooling Plates Subasm - Right + Left	
CHECKED BY: VM APPROVED BY: VM	DRAWN BY TMK	DRAWN FOR VM	DATE 4/6/2007	SCALE D	7102-036 SH. NO. 3 OF 7	REV. A	

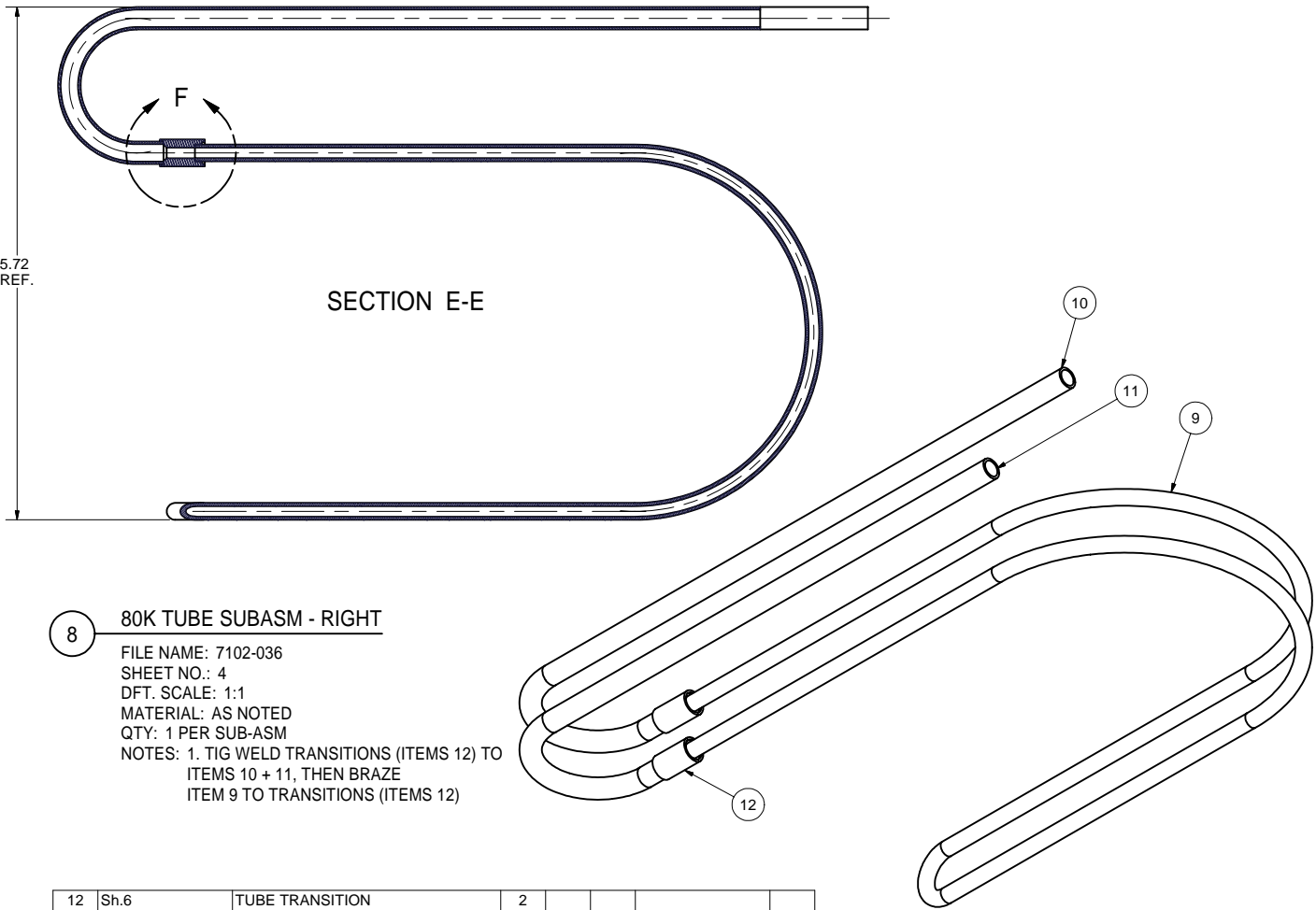
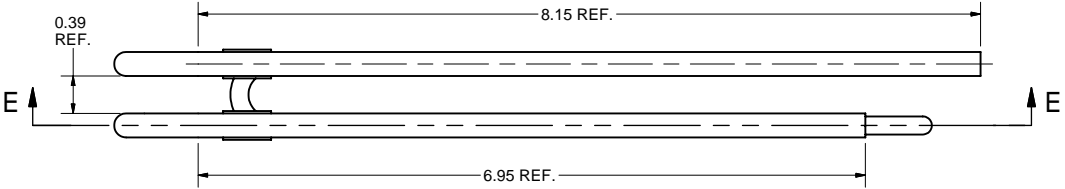
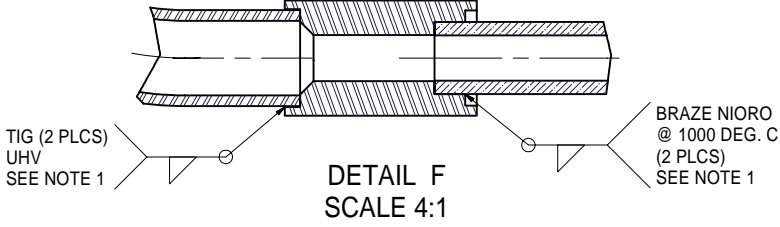
REVISIONS				
SYM.	ZONE	DESCRIPTION	DATE	APP.
A		PTS. 7 + 8 REFLECT CHANGES TO PTS. 10, 11 + 12. TMK	5/18/07	EC



**7 80K TUBE SUBASM - LEFT**

FILE NAME: 7102-036  
SHEET NO.: 4  
DFT. SCALE: 1:1  
MATERIAL: AS NOTED  
QTY: 1 PER SUB-ASM  
NOTES: 1. TIG WELD TRANSITIONS (ITEMS 12) TO  
ITEMS 10 + 11, THEN BRAZE  
ITEM 9 TO TRANSITIONS (ITEMS 12)

12	Sh.6	TUBE TRANSITION	2					
11	Sh.5	80K TUBE END - SHORT	1					
10	Sh.5	80 K TUBE END - LONG	1					
9	Sh.5	80 K COPPER TUBE	1					
7	Sh.4	80K TUBE SUBASM - LEFT	1					



**8 80K TUBE SUBASM - RIGHT**

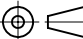


FILE NAME: 7102-036  
SHEET NO.: 4  
DFT. SCALE: 1:1  
MATERIAL: AS NOTED  
QTY: 1 PER SUB-ASM  
NOTES: 1. TIG WELD TRANSITIONS (ITEMS 12) TO  
ITEMS 10 + 11, THEN BRAZE  
ITEM 9 TO TRANSITIONS (ITEMS 12)

12	Sh.6	TUBE TRANSITION	2					
11	Sh.5	80K TUBE END - SHORT	1					
10	Sh.5	80K TUBE END - LONG	1					
9	Sh.5	80K COPPER TUBE	1					
8	Sh.4	80K TUBE SUBASM - RIGHT	1					

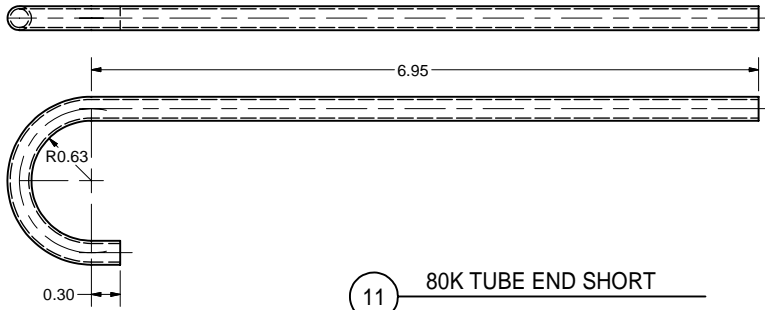
Release of final PO version for Meyer Tool - June 19, 2007.

FOR MACHINING LUBRICANT USE ONLY  
ALKALINE DETERGENT LUBRICANT CIMSTAR 40  
OR EQUIVALENT APPROVED BY CORNELL LEPP

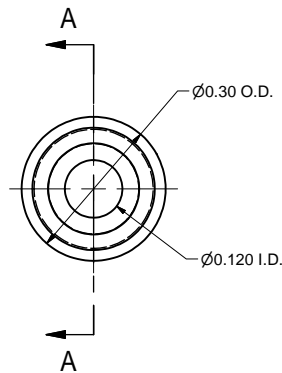
TECHNICAL RESOURCE APPROVALS REQUIRED BEFORE FABRICATION			
	OK	DATE	N/A
DRAFTING (O'Connell):			
MACHINE SHOP (Kaminski):			
CHEMISTRY (Conklin):			
ELECTRONICS SHOP (Barley):			
FURNACE BRAZING (Sherwood):			
BEAM WELDING (Sears):			
WELDING OTHER (Gallagher):			
UTILITIES INTEGRATION (Gallagher):			
STOCKROOMS (Lockwood):			

		ITEM	DWG. NO.	DESCRIPTION			G1	G2	G3	REMARKS		REV.		
								QUANTITY						
D		PRINT DISTR.	PLOT DATE: 1/15/2008 CAD FILE NAME: 7102-036.idw											
7102-036 SH. NO. 4 OF 7		CR-1	UNLESS OTHERWISE SPECIFIED:  DIMENSIONS ARE IN INCHES; TOLERANCES ON: .0 ± .02 .00 ± .010 .000 ± .005 FRACTIONS ± 1/32 ANGLES ± 0.5° ALL SURFACES 		<div><div>CORNELL UNIVERSITY Floyd R. Newman Laboratory Ithaca, NY 14853</div></div> <div>ERL Injector Cryomodule, Input Coupler 80K Flange Cooling 80K Tube Assembly - Left + Right, Sub-Assemblies</div>									
A		REV.	CHECKED BY: VM		DRAWN BY TMK		DRAWN FOR VM		DATE 4/6/2007		SCALE D	7102-036 SH. NO. 4 OF 7	REV. A	
			APPROVED BY: VM											

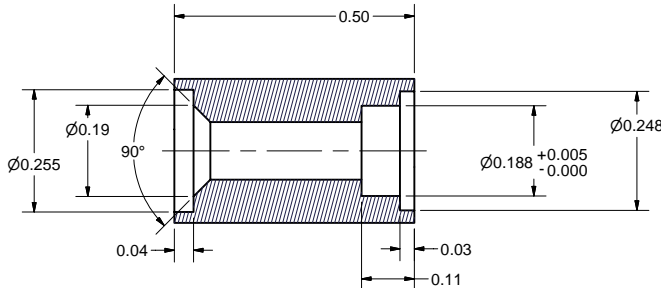
REVISIONS				
SYM.	ZONE	DESCRIPTION	DATE	APP.
A		INCREASED LENGTHS OF PTS. 10, 11 + 12 BY 0.25" TMK	5/18/07	EC



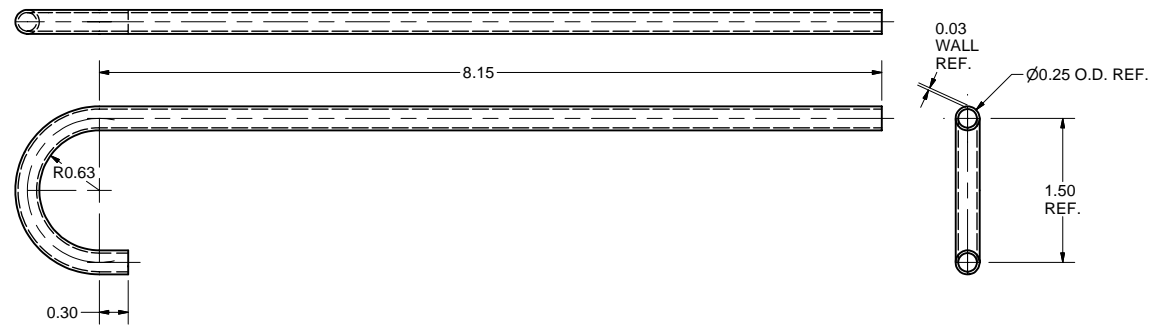
**11 80K TUBE END SHORT**  
FILE NAME: 7102-036  
SHEET NO.: 5  
DFT. SCALE: 1:1  
MATERIAL: 316L STN. STL TUBE 0.25 O.D. x 0.028 THK. WALL  
QTY: 1 PER SUB-ASM  
NOTES: DEVELOPED LENGTH = 9.61"



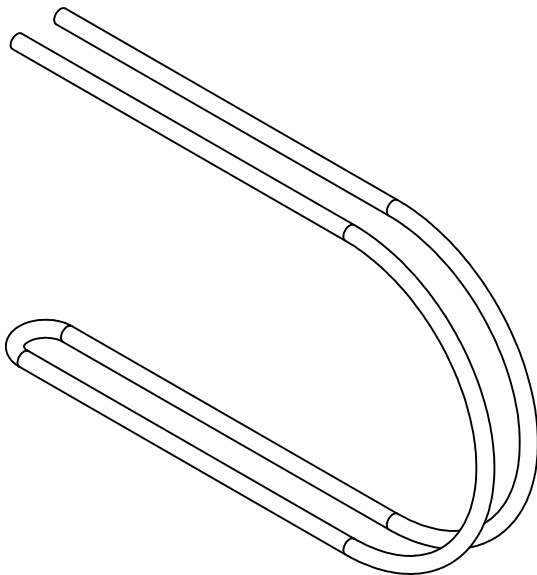
**12 TUBE TRANSITION**  
FILE NAME: 7102-036  
SHEET NO.: 5  
DFT. SCALE: 5:1  
MATERIAL: 316L STN. STL.  
QTY: 2 PER SUB-ASM  
NOTES:



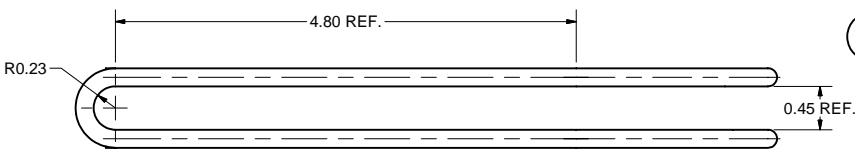
SECTION A-A  
SCALE 5:1



**10 80K TUBE END LONG**  
FILE NAME: 7102-036  
SHEET NO.: 5  
DFT. SCALE: 1:1  
MATERIAL: 316L STN. STL. TUBE 0.25 O.D. x 0.028 THK. WALL  
QTY: 1 PER SUB-ASM  
NOTES: DEVELOPED LENGTH = 10.81"

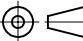






**9 COPPER TUBE**  
FILE NAME: 7102-036  
SHEET NO.: 5  
DFT. SCALE: 1:1  
MATERIAL: OFE Cu TUBE 0.188 O.D. x 0.035 WALL  
QTY: 1 PER SUB-ASM  
NOTES: DEVELOPED LENGTH = 32.96"



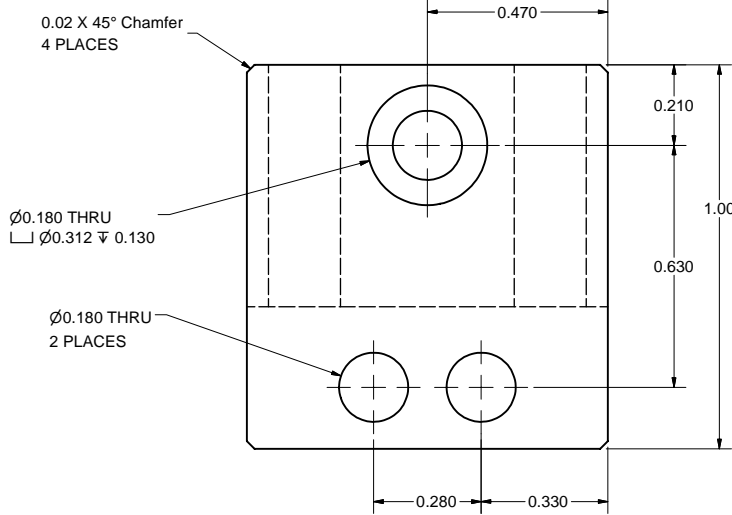
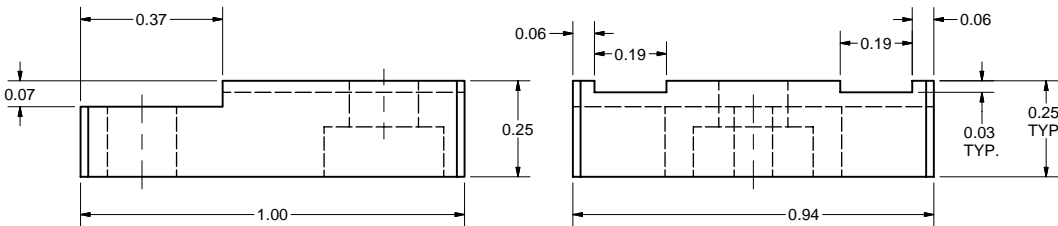
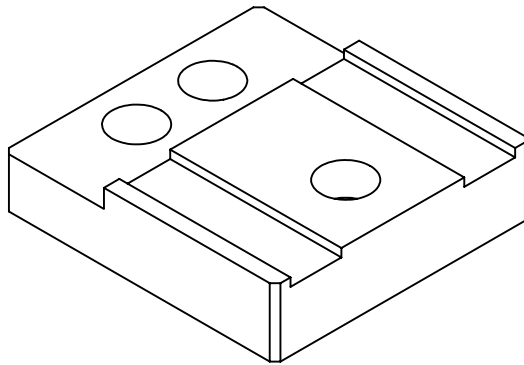
FOR MACHINING LUBRICANT USE ONLY  
ALKALINE DETERGENT LUBRICANT CIMSTAR 40  
OR EQUIVALENT APPROVED BY CORNELL LEPP

TECHNICAL RESOURCE APPROVALS REQUIRED BEFORE FABRICATION			
	OK	DATE	N/A
DRAFTING (O'Connell):			
MACHINE SHOP (Kaminski):			
CHEMISTRY (Conklin):			
ELECTRONICS SHOP (Barley):			
FURNACE BRAZING (Sherwood):			
BEAM WELDING (Sears):			
WELDING OTHER (Gallagher):			
UTILITIES INTEGRATION (Gallagher):			
STOCKROOMS (Lockwood):			

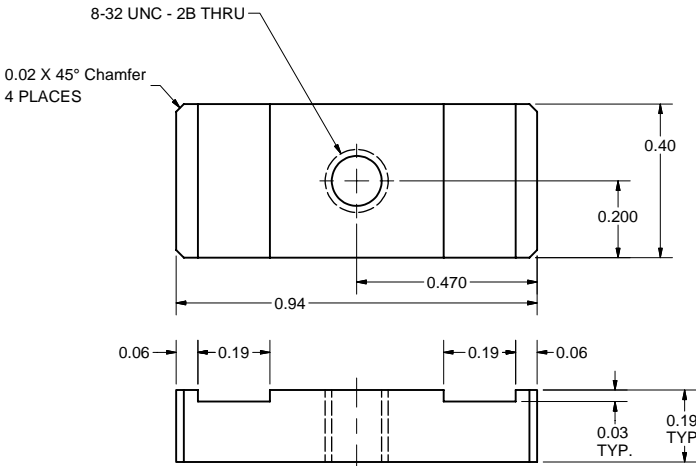
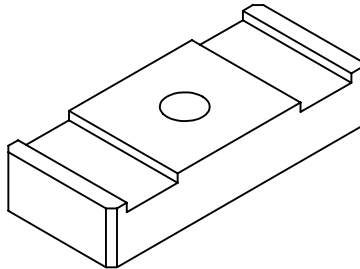
	ITEM	DWG. NO.	DESCRIPTION			G1	G2	G3	REMARKS	REV.
				QUANTITY						
	PRINT DISTR.	PLOT DATE: 1/15/2008 CAD FILE NAME: 7102-036.idw								
	7102-036 SH. NO. 5 OF 7	CR-1	UNLESS OTHERWISE SPECIFIED:  DIMENSIONS ARE IN INCHES; TOLERANCES ON: .0 ± .02 .00 ± .010 .000 ± .005 FRACTIONS ± 1/32 ANGLES ± 0.5° ALL SURFACES 	<div>  CORNELL UNIVERSITY Floyd R. Newman Laboratory Ithaca, NY 14853</div> <div>ERL Injector Cryomodule, Input Coupler 80K Flange Cooling Tubes and Tube Transition - Details</div>						
REV. A		CHECKED BY: VM	DRAWN BY: TMK	DRAWN FOR: VM	DATE: 4/6/2007	SCALE: D	7102-036 SH. NO. 5 OF 7	REV. A		
APPROVED BY: VM										

Release of final PO version for Meyer Tool - June 19, 2007.

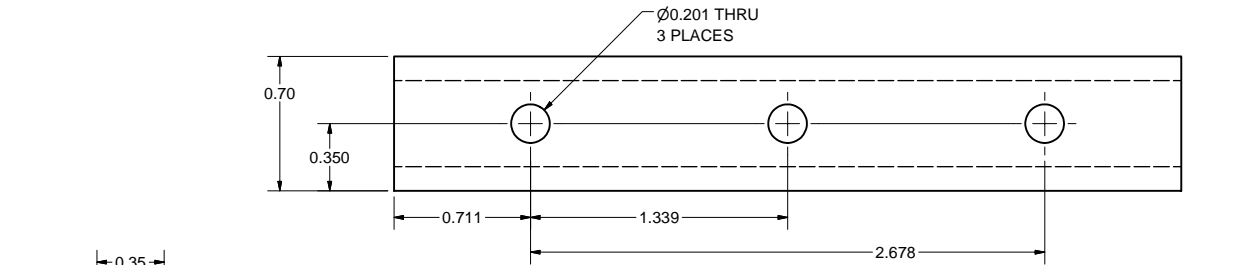
REVISIONS				
SYM.	ZONE	DESCRIPTION	DATE	APP.



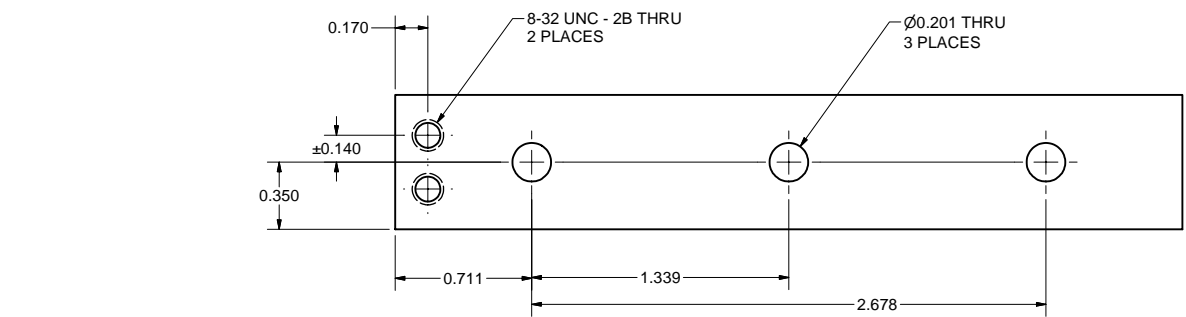
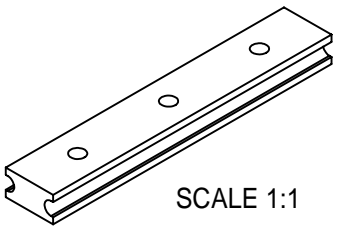
15 TOP CLAMP  
FILE NAME: 7102-036  
SHEET NO.: 6  
DFT. SCALE: 4:1  
MATERIAL: 316L STN. STL.  
QTY: 1 PER SUB-ASM  
NOTES:



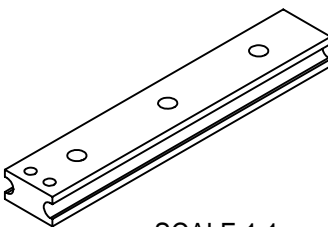
16 BOTTOM CLAMP  
FILE NAME: 7102-036  
SHEET NO.: 6  
DFT. SCALE: 4:1  
MATERIAL: 316L STN. STL.  
QTY: 1 PER SUB-ASM  
NOTES:






13 COOLING BAR - 1  
FILE NAME: 7102-036  
SHEET NO.: 6  
DFT. SCALE: 2:1  
MATERIAL: OFE COPPER  
QTY: 1 PER SUB-ASM  
NOTES:



14 COOLING BAR - 2  
FILE NAME: 7102-036  
SHEET NO.: 6  
DFT. SCALE: 2:1  
MATERIAL: OFE COPPER  
QTY: 1 PER SUB-ASM  
NOTES:



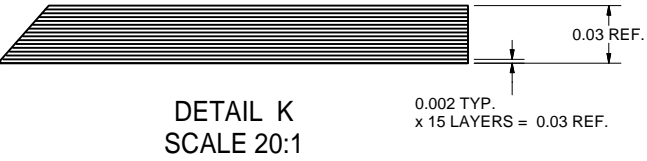
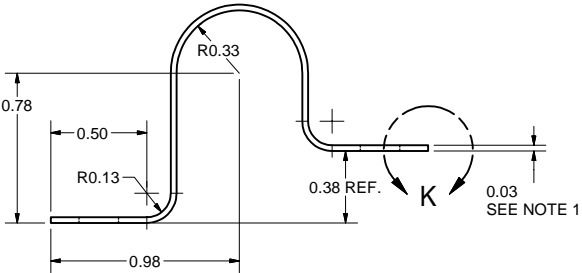
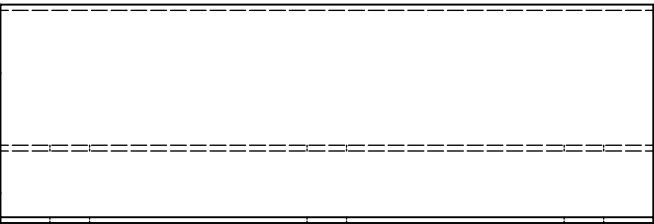
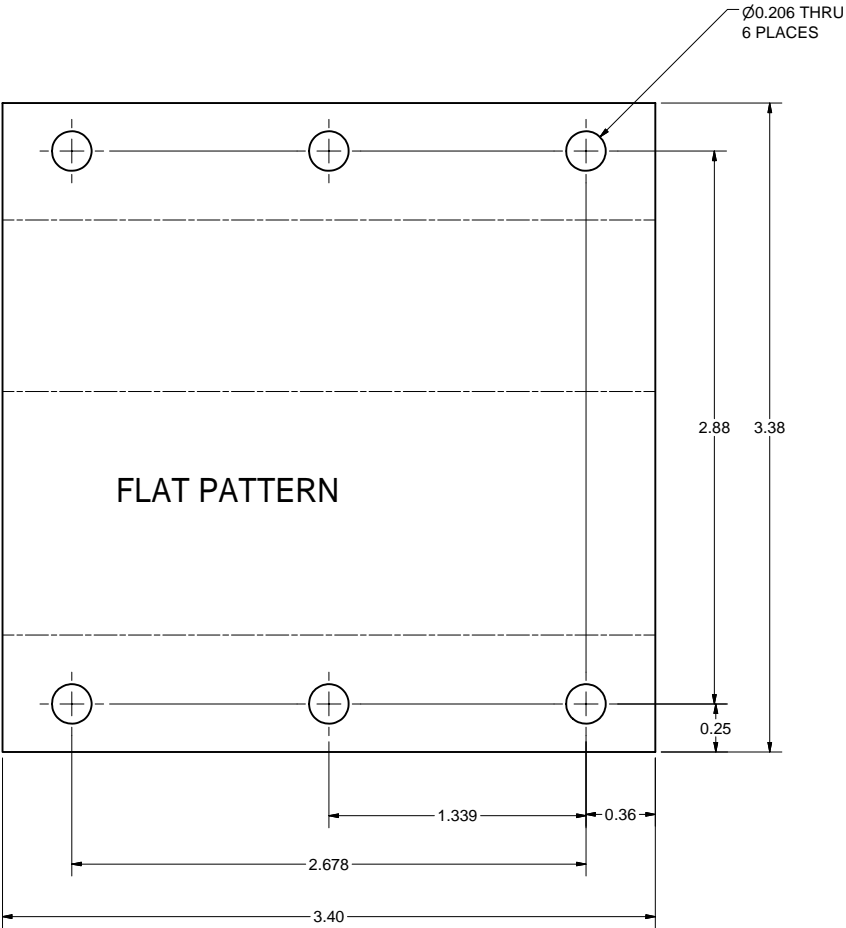
FOR MACHINING LUBRICANT USE ONLY ALKALINE DETERGENT LUBRICANT CIMSTAR 40 OR EQUIVALENT APPROVED BY CORNELL LEPP						ITEM		DWG. NO.		DESCRIPTION			G1G2G3 QUANTITY			REMARKS		REV.	
TECHNICAL RESOURCE APPROVALS REQUIRED BEFORE FABRICATION				 D		PRINT DISTR.		PLOT DATE: 1/15/2008 CAD FILE NAME: 7102-036.idw											
						CR-1		<div><div><div> <b>LEPP</b></div><div>CORNELL UNIVERSITY Floyd R. Newman Laboratory Ithaca, NY 14853</div></div><div>ERL Injector Cryomodule, Input Coupler 80K Flange Cooling Cooling Bars and Top and Bottom Clamps, Details</div></div> <div><div><div>CHECKED BY: VM</div><div>APPROVED BY: VM</div></div><div><div>DRAWN BY TMK</div><div>DRAWN FOR VM</div><div>DATE 4/6/2007</div><div>SCALE D</div><div>7102-036 SH. NO. 6 OF 7</div></div><div>REV.</div></div>											
SH. NO. 6 OF 7		7102-036 OF 7		OK		DATE												N/A	
DRAFTING (O'Connell):																			
MACHINE SHOP (Kaminski):																			
CHEMISTRY (Conklin):																			
ELECTRONICS SHOP (Barley):																			
FURNACE BRAZING (Sherwood):																			
BEAM WELDING (Sears):																			
WELDING OTHER (Gallagher):																			
UTILITIES INTEGRATION (Gallagher):																			
STOCKROOMS (Lockwood):																			

Release of final PO version for Meyer Tool - June 19, 2007.

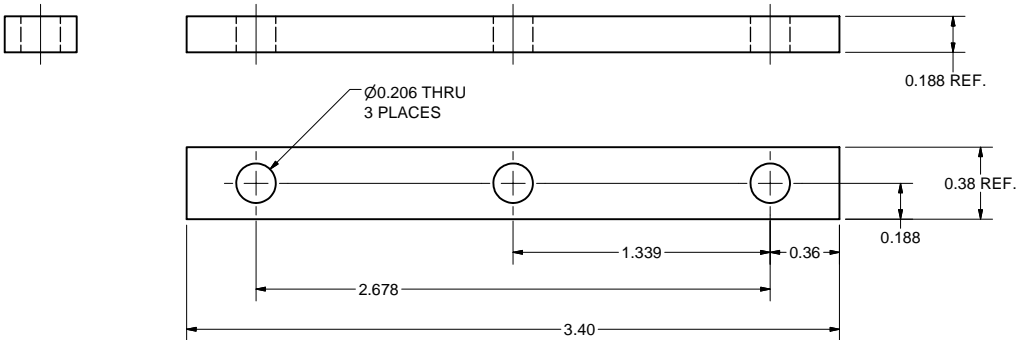


ERL Injector Cryomodule, Input Coupler 80K Flange Cooling  
Cooling Bars and Top and Bottom Clamps, Details

REVISIONS				
SYM.	ZONE	DESCRIPTION	DATE	APP.
A	E2	ADDED DIMS TO PT.18	5/24/07	TMK
B	D2	CHANGED NAME AND ADDED DETAIL K TO PT.18	9/24/07	TIO



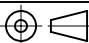


- 18 80K FLEX LAYERED FOILS JUMPER
- FILE NAME: 7102-036  
SHEET NO.: 7  
DFT. SCALE: 2:1  
MATERIAL: 0.002" THK. OFE COPPER FOIL  
QTY: 20 PER ERL CRYOMODULE
- NOTES: 1.) EVERY JUMPER MADE FROM 15 LAYERS OF 0.002" FOIL (300 TOTAL)  
2. USE NO CUTTING FLUID OTHER THAN ALCOHOL, FOILS MUST BE OIL-FREE.



- 17 CLAMP STRIP
- FILE NAME: 7102-036  
SHEET NO.: 7  
DFT. SCALE: 2:1  
MATERIAL: 316L STN. STL. BAR 3/16" x 3/8"  
QTY: 2 PER SUB-ASM
- NOTES:

FOR MACHINING LUBRICANT USE ONLY  
ALKALINE DETERGENT LUBRICANT CIMSTAR 40  
OR EQUIVALENT APPROVED BY CORNELL LEPP

TECHNICAL RESOURCE APPROVALS REQUIRED BEFORE FABRICATION			
	OK	DATE	N/A
DRAFTING (O'Connel):			
MACHINE SHOP (Kaminski):			
CHEMISTRY (Conklin):			
ELECTRONICS SHOP (Barley):			
FURNACE BRAZING (Sherwood):			
BEAM WELDING (Sears):			
WELDING OTHER (Gallagher):			
UTILITIES INTEGRATION (Gallagher):			
STOCKROOMS (Lockwood):			

		ITEM		DWG. NO.	DESCRIPTION			G1	G2	G3	REMARKS		REV.
									QUANTITY				
<div>D</div> <div>7102-036</div> <div>SH. NO. 7 OF 7</div>	PRINT DISTR.	PLOT DATE: 1/15/2008 CAD FILE NAME: 7102-036.idw											
	CR-1	UNLESS OTHERWISE SPECIFIED:  DIMENSIONS ARE IN INCHES; TOLERANCES ON: .0 ± .02 .00 ± .010 .000 ± .005 FRACTIONS ± 1/32 ANGLES ± 0.5° ALL SURFACES 			<div><div>CORNELL UNIVERSITY FLOYD R. NEWMAN LABORATORY Ithaca, NY 14853</div></div> <div>ERL Injector Cryomodule, Input Coupler 80K Flange Cooling Clamp Strip and 80K Flex Jumper, Details</div>								
	CHECKED BY: VM	DRAWN BY: TMK		DRAWN FOR: VM		DATE: 4/6/2007		SCALE: <div>D</div>		7102-036 SH. NO. 7 OF 7			REV. B
	APPROVED BY: VM												

Release of final PO version for Meyer Tool - June 19, 2007.